

## Carpenter Hall house

Address Main Av, Wilston, Brisbane, Q

Practice Russel Hall

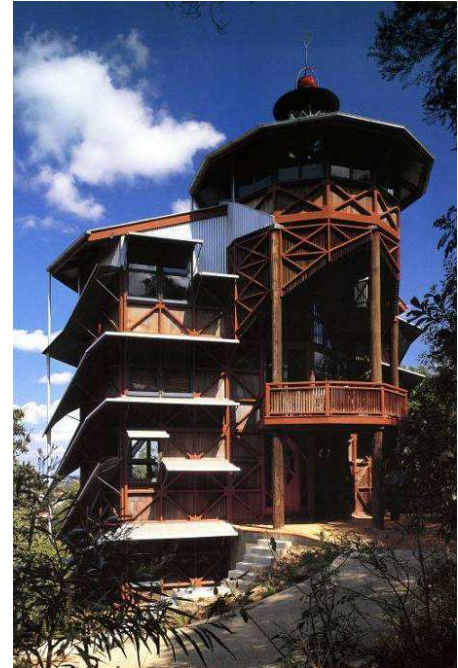
Designed c1985 Completed 1986

### History & Description

In this extraordinary beacon of individual expression, Russel Hall designed a 5 level house for his sister. The idea of a tower on its elevated hillside site provided the core of the structure and 4 lower levels peel off the stair case which connects them to the loft at the top. The house provides a plan form of dodecagon (12 sided) geometry, one room deep on the south side of the tower.

Hot air is extracted from all levels by a prominent turbine on the tower roof. Its lantern contains fluid filled prisms which produce rainbow patterns within and without; coloured glass increases this effect.

Diagonal sunshades of galvanised steel provide a strong geometry in contrast to its vertical structure which uses traditional timber construction techniques of exposed stud bracing single skin walls and tall timber stumps.



### Statement of Significance

Sometimes described as a tropical folly, the Carpenter Hall house is an extremely inventive conception in pushing vernacular forms into unfamiliar geometry to produce a highly individual yet functional result.

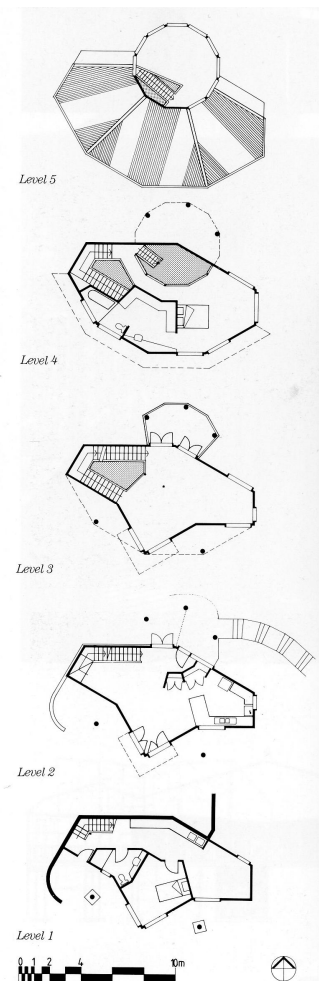
### Criteria Applicable

N1 – Significant heritage value in demonstrating principal characteristics of a particular class or period of design.

N2 – Significant heritage value in exhibiting particular aesthetic characteristics.

N3 – Significant heritage value in establishing a high degree of creative achievement.

N5 – Having a special association with the life or works of an architect of significant importance in our history.



Drawings from *Australian Architects 5*.