

Harry and Penelope Seidler House

Address 13 Kalang Avenue, Killara, NSW, 2071

Practice Harry and Penelope Seidler
Harry Seidler & Associates

Designed 1966 Completed 1967

History & Description The house occupies a steep bushland site, sloping westwards to a creek. It is approached from the road at the top and steps down from a cantilevered garage through four half levels which follow the slope of the land. The structure consists of four suspended concrete trays supported by reinforced concrete block traverse blades which divide the building into north facing daytime/active spaces, a central circulation spine and night time/passive spaces.

The house embodies both a vertical and horizontal extension of space. The level changes and central open well provide a visual link from top to bottom. Large areas of glass and projecting terraces draw the eye out from each level to the natural landscape setting. Materials include board formed reinforced concrete, rubble stonework, white concrete block work and Tasmanian Oak boarded ceilings.

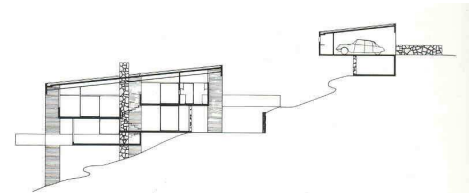
The top level consists of kitchen, dining and study, the next living room and main bedroom, the third children's room and bathroom, with studio, laundry and guest bedroom at the bottom having access to the garden. (NSW Heritage Branch online database #5049861)

Statement of Significance The Seidler House is highly regarded as an outstanding work of architecture. In the year of its completion, 1967, the NSW Chapter of the Royal Australian Institute of Architects awarded the Seidler House the Wilkinson Award. This house has a significant degree of technical significance through its ability to demonstrate the innovative use of commercial scale structural techniques in a residential design. It is also significant because of its association with Harry Seidler, having being his principal residence and a frequent venue for the Seidlers' contribution to Sydney's cultural life. (NSW Heritage Branch online database #5049861)

Criteria Applicable **N1.** Significant heritage value in demonstrating the principal characteristics of a particular class or period of design
N2. Significant heritage value in exhibiting particular aesthetic characteristics
N3. Significant heritage value in establishing a high degree of creative achievement
N4. Having significant monumental and symbolic heritage value to the development of architecture and the history of architecture
N6. Significant heritage value in demonstrating a high degree of technical achievement of a particular period



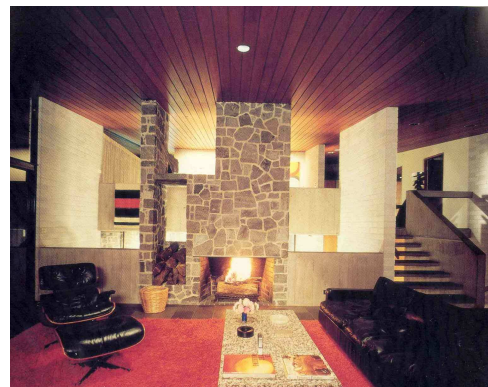
View of house from the creek (Source: *Harry Seidler: Selected and Current Works, 1997*)



Section (Source: *Harry Seidler: Selected and Current Works, 1997*)



View from the north side (Source: *Harry Seidler: Selected and Current Works, 1997*)



Living space (Source: *Harry Seidler: Selected and Current Works, 1997*)