

Robin Boyd House II

Address 290 Walsh Street, South Yarra 3141

Practice Grounds, Romberg and Boyd (Robin Boyd)

Designed 1957

Completed 1958

History & Description In 1958, architect and architectural writer and critic, Robin Boyd, designed a house for his family on a narrow, sloping block of land. The house divided adults and children into two zones, separated by an open courtyard. This tripartite design was tied together by a single cable-hung roof which flowed from the two storey section at the front to the single storey section at the rear, with an opening over the central courtyard.

The two-level, front section of the house contains a floating platform, visually suspended in the space, allowing it to be read as one volume. This platform, at entry level, contains the combined formal living area, master bedroom and Boyd's study, and is set in from the side walls with the strategic and permanent positioning of furniture used as balustrading. This platform projects as a cantilevered balcony into the courtyard space. Stairs lead down to the less formal family, dining and kitchen space, from which access is provided to the central courtyard. The side walls of the court are glazed, obscure on the north for privacy, and covered walkways either side lead to the rear children's section of the house. The latter is also glazed to the courtyard, with a bedroom and study directly accessed from the court, and two more private bedrooms and a bathroom accessed from the study. (Extracts from VHR#H2105)

The house was extensively described and illustrated in Boyd's 1970 book *Living in Australia*. In 2006 it won the RAI Victoria's 25 year award.

Statement of Significance It is significant as an outstanding example of the domestic designs of prominent architect and critic Robin Boyd, particularly as a precursor of his later designs for larger houses.

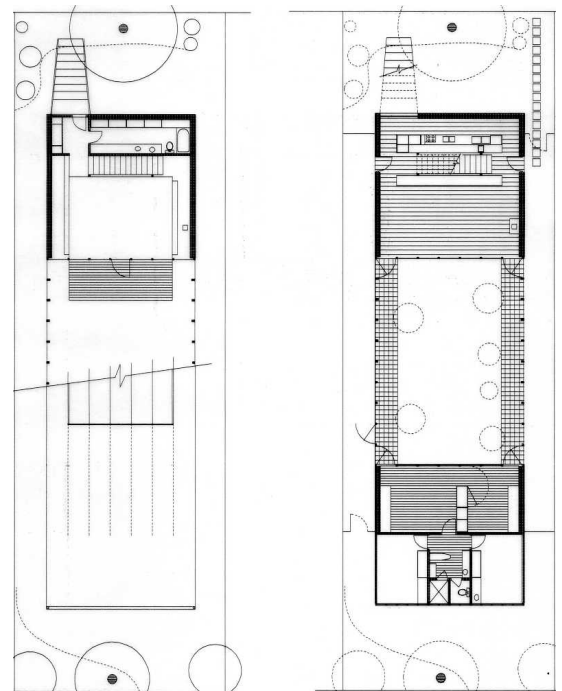
It is significant as a material expression of Boyd's architectural ideas and writings, which were known internationally at the time.

It is significant as an outstanding example of the buildings with designs based on strong structural-functional ideas which were an outstanding feature of architecture of the 1950s.

Criteria Applicable N1 - Significant Heritage value in demonstrating the principal characteristics of a particular class or period of design.
N3 - Significant heritage value in establishing a high degree of creative achievement
N5 - Having a special association with the life or works of an architect of significant importance in our history.



Platform over living room. Photo by Mark Strizic



First & ground floor plans. Sale brochure 2007



Platform level & stair down to living room. Photo by MidCenArc



View of model to NE corner. Photo by Museum Victoria